

Binghamton University

The Open Repository @ Binghamton (The ORB)

Research Days Posters 2021

Division of Research

2021

Hirohiko Araki's Fashionably Exhibited Artwork

Maxwell Maceluch

Binghamton University--SUNY

Follow this and additional works at: https://orb.binghamton.edu/research_days_posters_2021

Recommended Citation

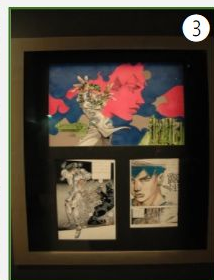
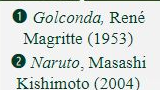
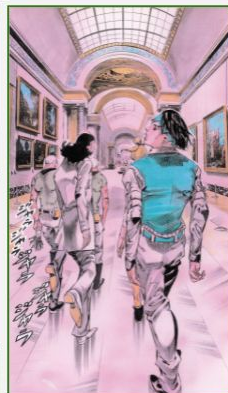
Maceluch, Maxwell, "Hirohiko Araki's Fashionably Exhibited Artwork" (2021). *Research Days Posters 2021*. 71.

https://orb.binghamton.edu/research_days_posters_2021/71

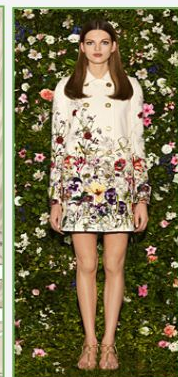
This Book is brought to you for free and open access by the Division of Research at The Open Repository @ Binghamton (The ORB). It has been accepted for inclusion in Research Days Posters 2021 by an authorized administrator of The Open Repository @ Binghamton (The ORB). For more information, please contact ORB@binghamton.edu.

Hirohiko Araki's Fashionably Exhibited Manga

Presenter: Maxwell Maceluch Faculty Advisor: Pamela Smart
Harpur College of Arts and Sciences, Source Project



③ Rohan Au Louvre, as featured in in The Louvre Invites The Comics exhibit (January 22-April 13, 2009)



④ Les Sous-sols du Révolu: Extraits du journal d'un expert, 48. (2006)

⑤ Lichtenstein: A Retrospective, featured in Tate Modern (February 21-May 27, 2013)



The sales-based nature, sequential imagery, and narrative component of graphic literature historically barred it from museum exhibition. Famous for his long-running manga, *JoJo's Bizarre Adventure*, Hirohiko Araki has had panels, artwork, fashion, and spinoffs from the series presented in collaboration with Western institutions of both high art and high fashion, however. Manga is the Japanese equivalent to comics and, as such, it is a medium generally regarded as mass-produced entertainment. The inclusion of Araki's work within such esteemed circles, then, brings the very definition of artistic value into question. Through his use of paneling, Western art inspirations, and intertextuality commenting on the conflicted relationship between manga and museums, Araki has placed himself within the post-modern inclusivity of museum audiences in The Louvre and, on the other hand, the exclusivity of fashion houses like Gucci. Artistic and monetary value are intrinsically linked, but Araki's graphic novels produced in collaboration with such establishments are themselves mass produced, yet are nevertheless held in high regard, evidencing that such values are ultimately contextual.

① Golconda, René Magritte (1953)
② Naruto, Masashi Kishimoto (2004)



⑥ Gucci X Hirohiko Araki X Spur (September 17-October 6, 2011)
⑦ Takashi Murakami X Louis Vuitton (2002)