

Binghamton University

The Open Repository @ Binghamton (The ORB)

Research Days Posters 2021

Division of Research

2021

Parks and Recreation in Binghamton

Peter Savrides

Binghamton University--SUNY

Follow this and additional works at: https://orb.binghamton.edu/research_days_posters_2021

Recommended Citation

Savrides, Peter, "Parks and Recreation in Binghamton" (2021). *Research Days Posters 2021*. 82.
https://orb.binghamton.edu/research_days_posters_2021/82

This Book is brought to you for free and open access by the Division of Research at The Open Repository @ Binghamton (The ORB). It has been accepted for inclusion in Research Days Posters 2021 by an authorized administrator of The Open Repository @ Binghamton (The ORB). For more information, please contact ORB@binghamton.edu.



PRESENTER:

Peter Savrides

Parks and Natural Areas in Binghamton

BACKGROUND

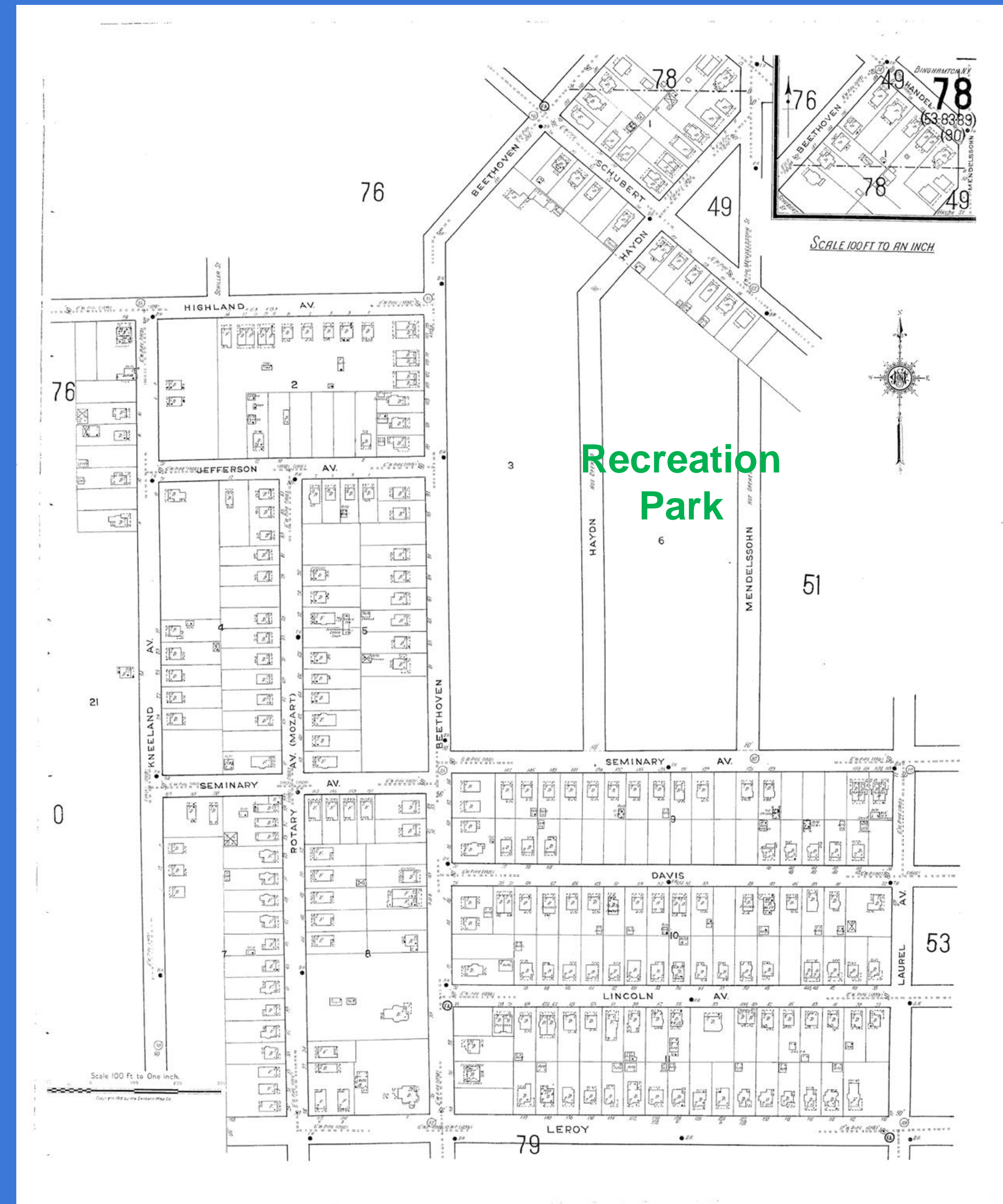
Parks are an essential part of life and leisure for urban populations. Studying how to further improve and understand the rationale behind building new parks and better utilizing old ones can provide crucial information for improving the quality of life for the many who use them.

METHODS

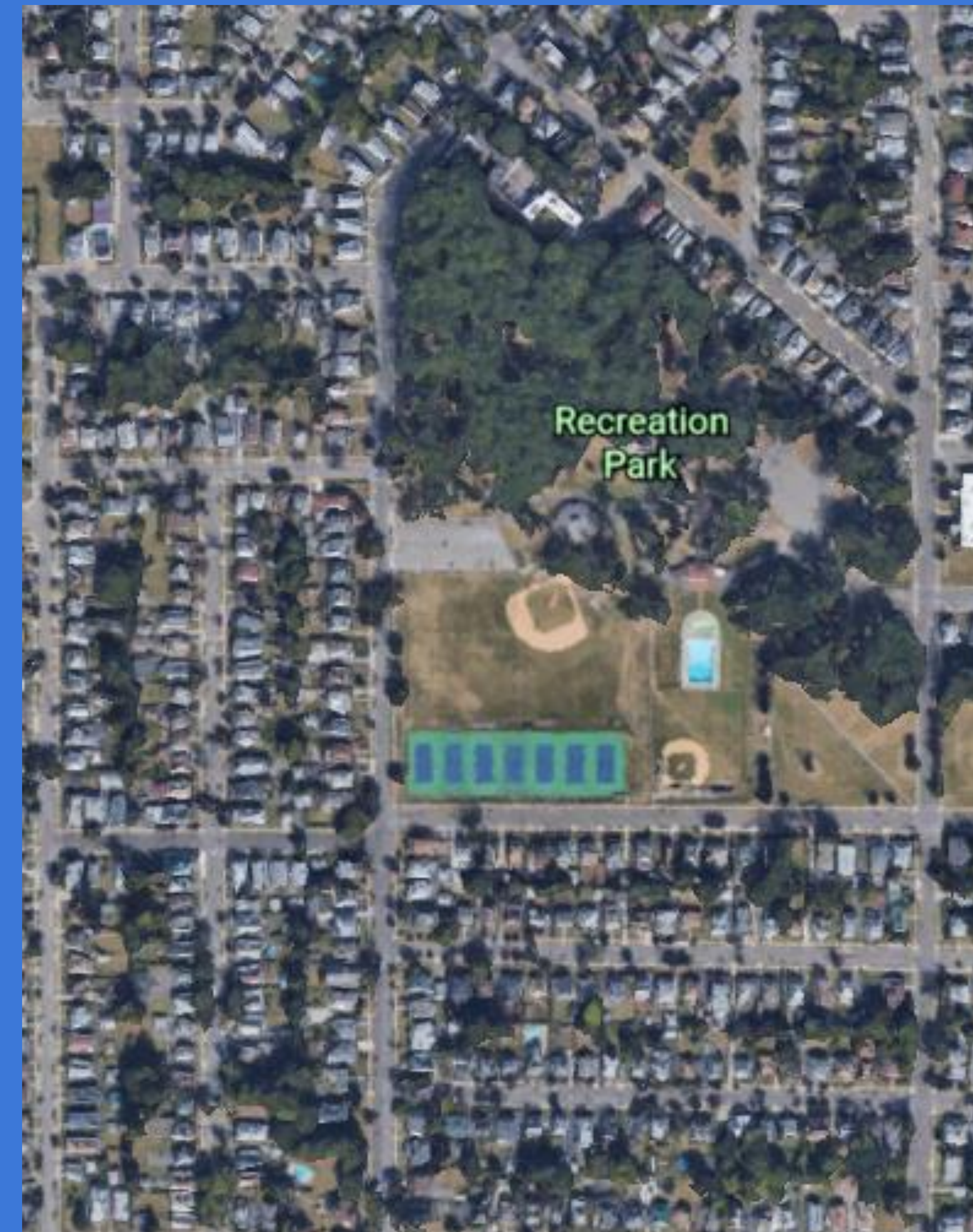
1. Visited the Bing Nature Preserve and Rec Park on 4 Saturdays
2. Observed groups of people in a participant study within a one hour time period
3. Analyzed data for patterns in attendance

RESULTS

- Children and families were observed slightly more at Rec Park
- Young people were observed much more at the Nature Preserve



Map of the site of future Recreation Park (Sanborn Fire Insurance Map, 1918)

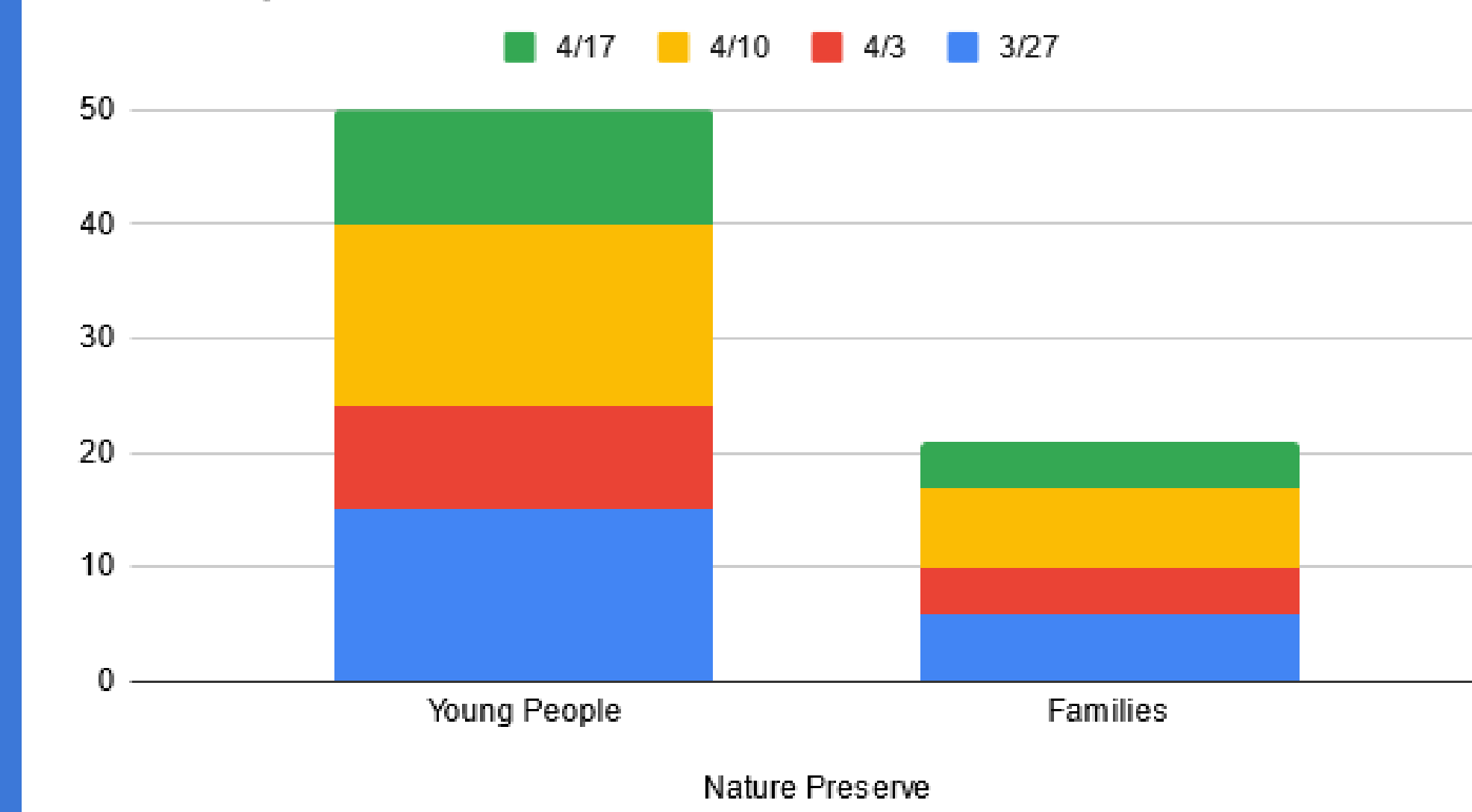


Map of Recreation Park today (Google Earth, 2021)

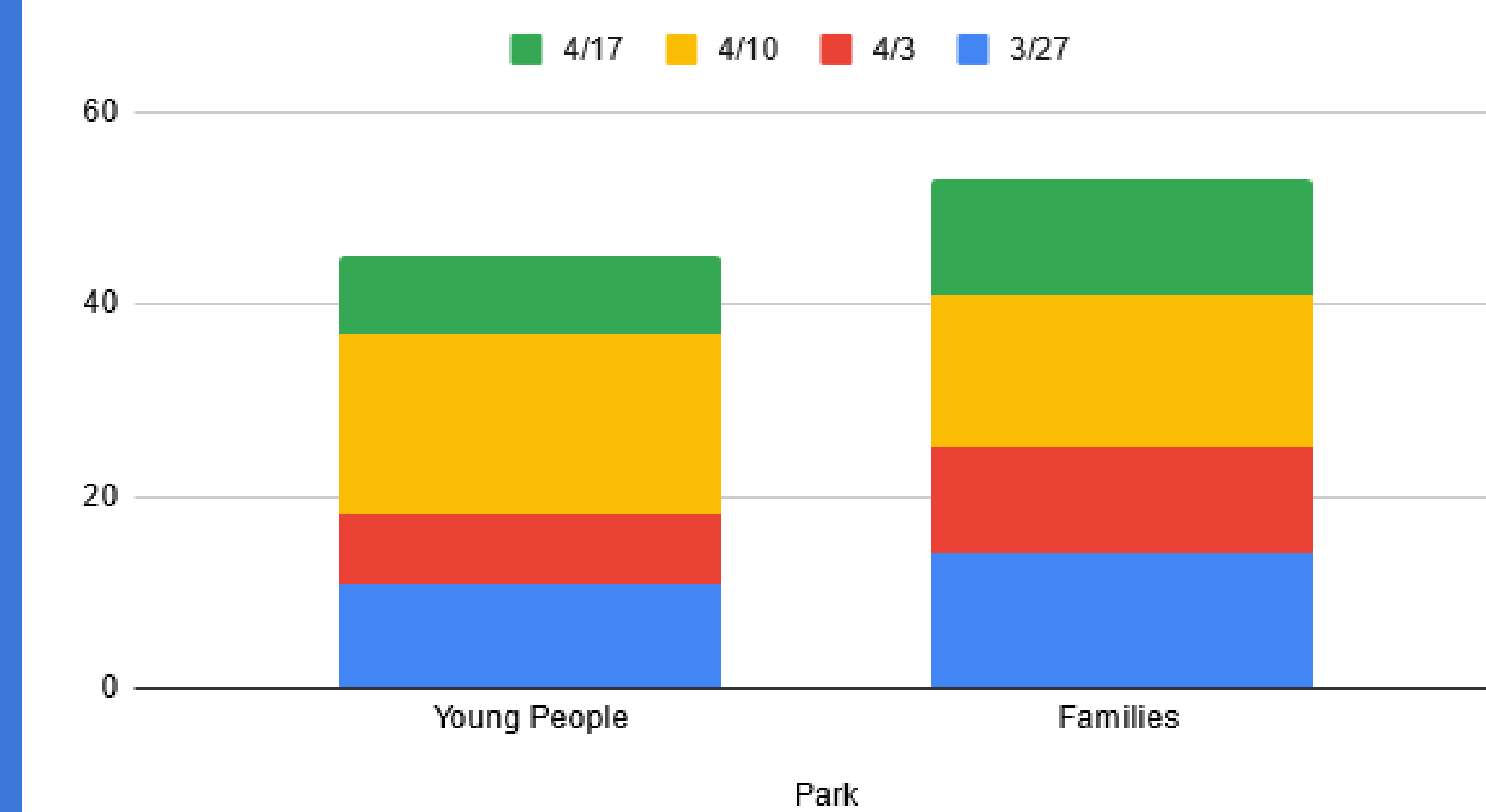
Families were the main demographic at Rec Park, but young people made up a significant majority of attendance at the Nature Preserve and were only slightly behind family attendance at Rec Park.

DATA

University Nature Preserve



Rec Park



Possible Biases

The University Nature Preserve may have a higher number of students due to its closer proximity to student housing. Also I conducted all the visits on Saturdays; during the weekend parents are more likely to have time off to take their kids to a park outside.

Further Research

It is still needed to conduct more research into the psychological aspect of why certain demographics are more likely to visit a certain type of recreational area over others.

REFERENCES

(Sanborn Fire Insurance Map, 1918) (Google Earth, 2021)